



NeoFlow

NEOFLow

流光系列培训

—— 研发中心

2025.11.20

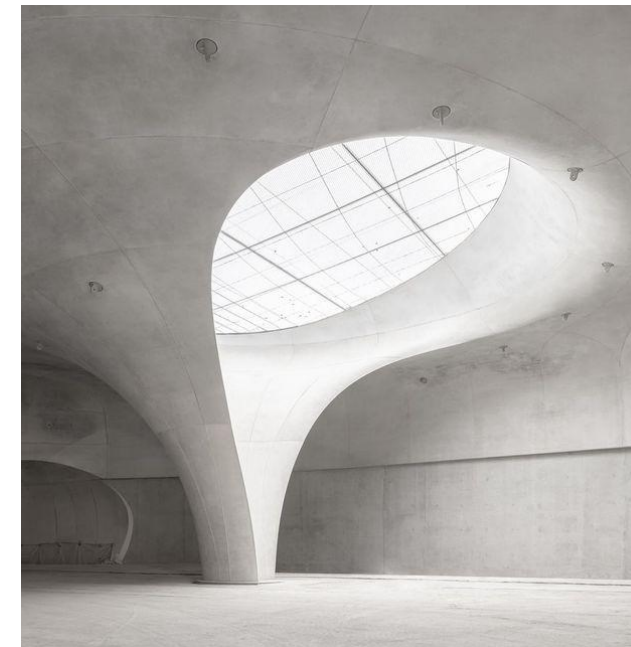
kano

CONTENTS 目录

- 1 研发背景
- 2 设计理念
- 3 产品款式
- 4 产品卖点
- 5 配色说明
- 6 工艺说明

1

研发背景



- 1、**职场需求演变**：后疫情时代，混合办公模式兴起，工作者更注重家具心理亲和力，**流畅曲线**能缓解职场焦虑，提升专注效率
- 2、**设计思潮迭代**：受生物形态设计与**柔性科技**影响，办公家具开始摒弃工业棱角，转而通过**有机线条**传递科技与自然的共生关系



- 在数字化与人性化交织的办公趋势下，传统办公家具的刚性形态已难以满足现代职场对灵动与舒适的诉求。我们以“科技柔线”为核心理念，将流线型曲面与智能功能融合，通过有机线条弱化机械感，以动态美学平衡效率与人文关怀
- 延续我司“曲线”型班台设计风格，兼顾未来科技感和艺术美感，适合多种高端、现代的场景，补充产品体系

2

设计理念



/液态金属的流动之美/

展现的是未来科技的力量与柔美，曲面的延展与
转折不仅增强层次深度更以动态张力激活场所能
量，让设计与感知共舞

The flowing beauty of liquid metal
shows the power and beauty of future technology

/曲线的动态之美/

以曲面美学重构空间韵律

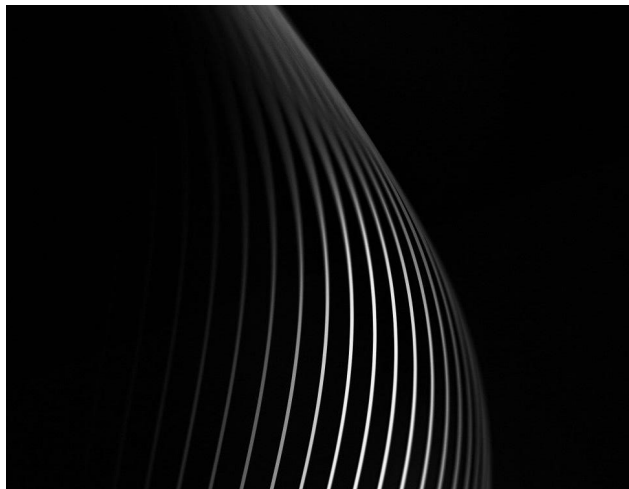
通过流动的线条变化打破静态平衡

赋予空间生动的视觉节奏

Reconstructing the rhythm of space with curved surface aesthetics

Breaking the static balance through the changes of flowing lines

Giving the space a vivid visual rhythm





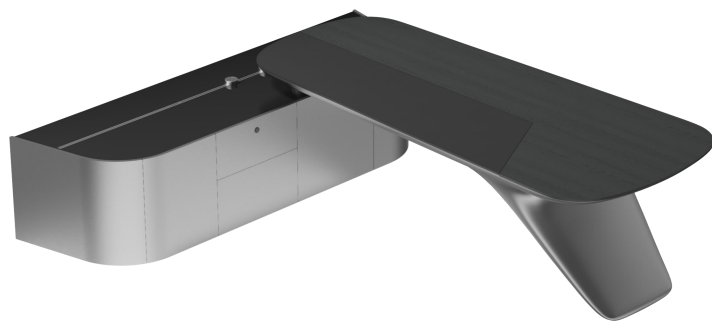
/光的渐消之美/

以光影渐变诠释曲面的空间力量，让光在弧面的流动中由亮至暗自然过渡，呈现出柔和而深邃的视觉层次感

The spatial power of the curved surface is interpreted with the gradient of light and shadow, allowing the light to naturally transition from light to dark in the flow of the arc, presenting a soft and deep visual layering

3

产品款式

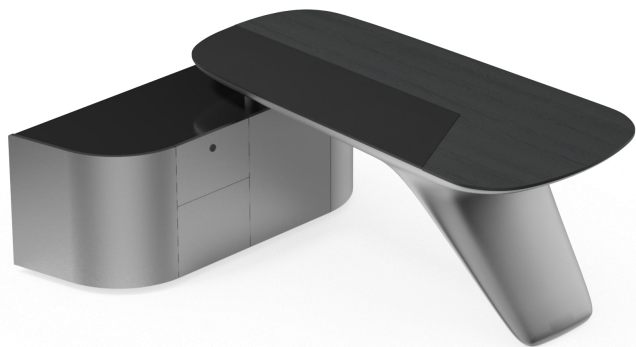


高管桌

3200*2400*760 2800*2400*760 2400*2100*760

标配说明:

标配说明: 标配DTC隐藏反弹导轨, DTC隐藏阻尼导轨, DTC阻尼铰链, 智能指纹锁, 6000冷光灯带, 1个顶级电力轨道, 2个五孔适配器, 2个86型五孔插座, 1个网电插座



高管桌

2000*1600*760

标配说明:

标配说明: 标配DTC隐藏反弹导轨, DTC隐藏阻尼导轨, DTC阻尼铰链, 智能指纹锁, 6000冷光灯带, 多功能集成插座 (内含2个电源模块, 1个HDMI, 1网络, 1电话, 1个穿线孔), 2个86型五孔插座, 1个网电插座



会议桌

4200*1400*760

•标配说明:

标配说明: 标配DTC阻尼导轨, 6000K冷光灯带, 多功能集成插座 (内含2个电源模块, 1个HDMI, 1网络, 1电话, 1个穿线孔)



会议桌

3600*1400*760 3200*1400*760 2800*1200*760

标配说明:

标配说明: 标配DTC阻尼导轨, 6000K冷光灯带, 多功能集成插座 (内含2个电源模块, 1个HDMI, 1网络, 1电话, 1个穿线孔)



会议桌

2200*1000*760

功能说明: 无走线功能



高管柜

3800*450*2100 3400*450*2100 3000*450*2100

标配说明:

标配说明: 标配DTC隐藏阻尼导轨, 五珠挂衣器, 钢化灰玻, 6000冷光灯带, 单边铝框玻璃门



边柜

2400*450*900

标配说明:

标配说明: 标配DTC阻尼铰链, 钢化灰玻

CY29 雾影黑栲

黑色烤漆玻璃

流星灰防火板

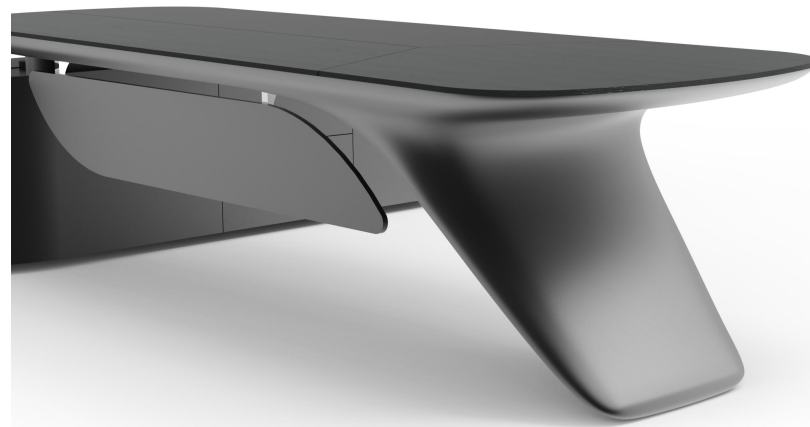
银河灰油漆

黑色小荔枝皮

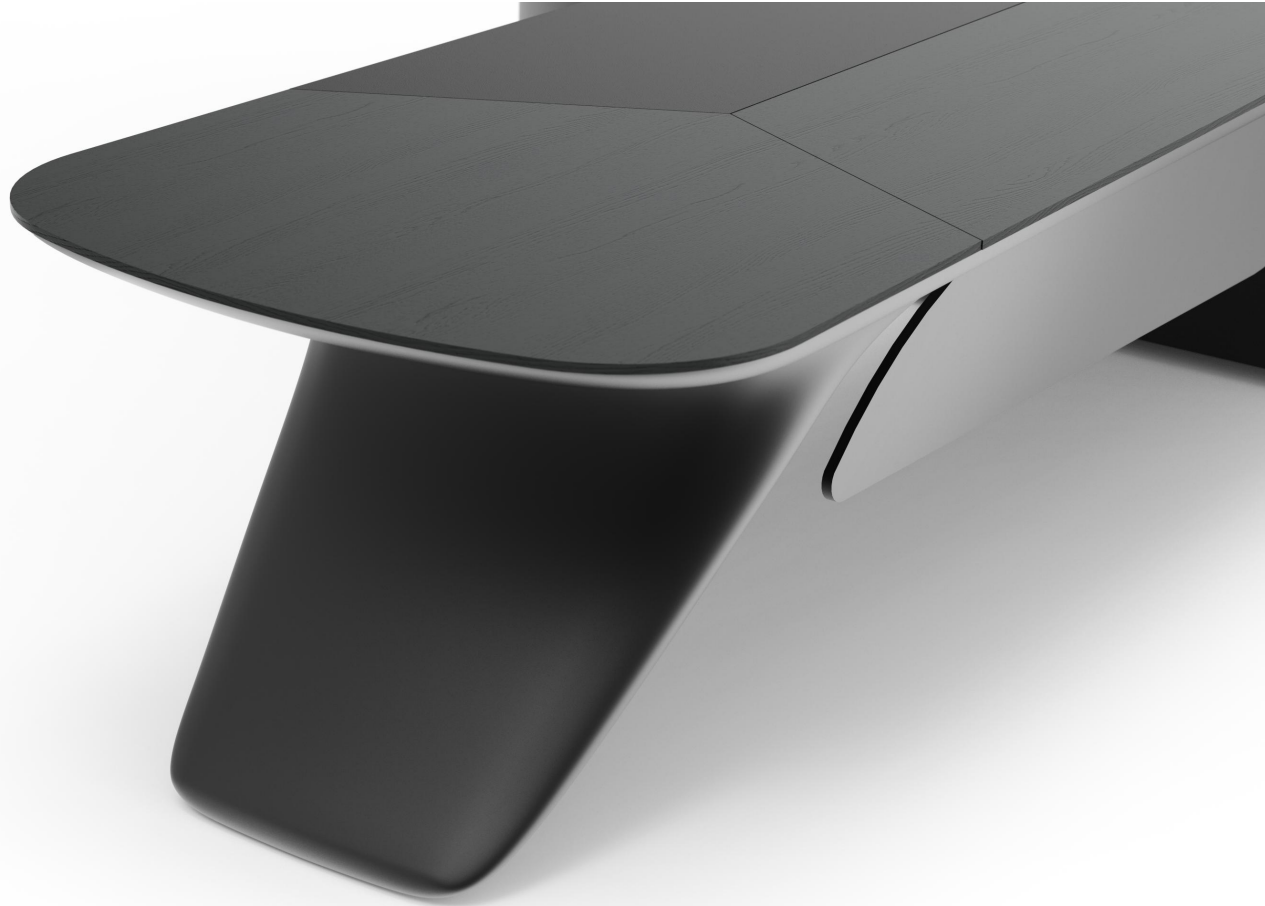


4

产品卖点

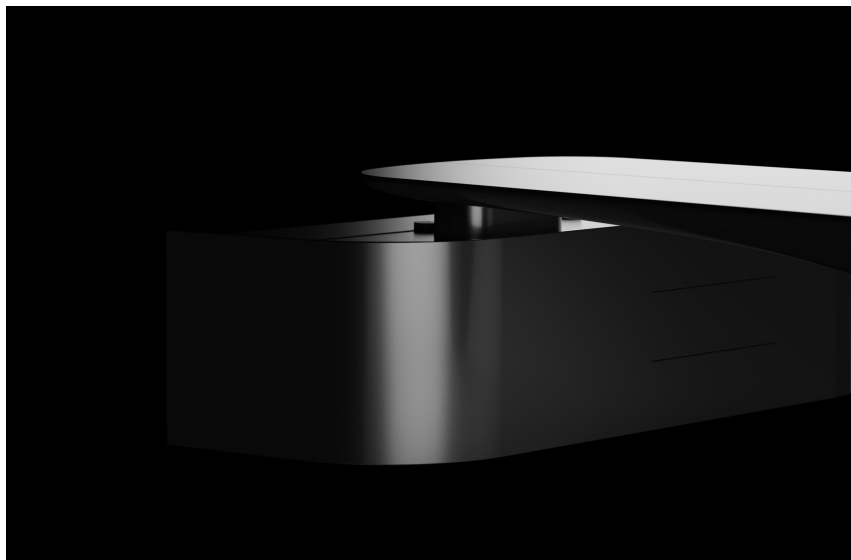


圆润有机的脚型充满力量感与艺术感
The rounded and organic foot shape is
full of power and artistic sense.



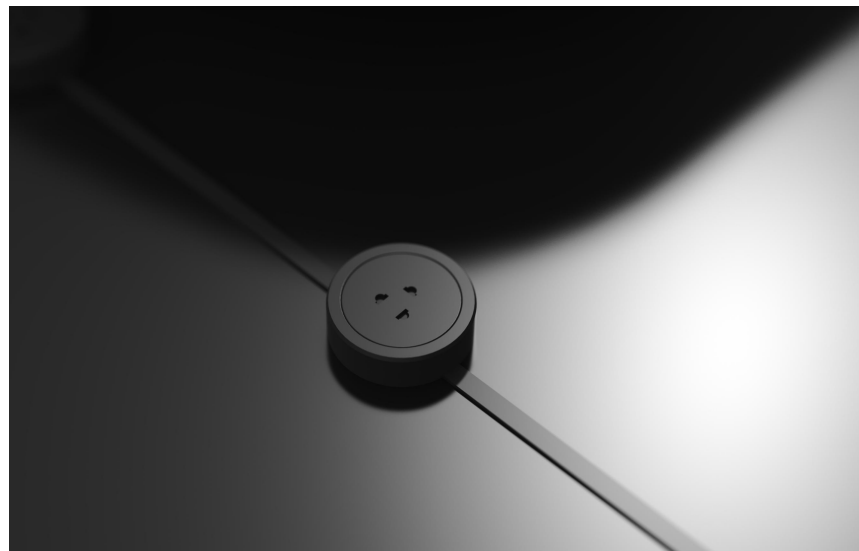
黑色白蜡木与黑色皮纹沉稳而大气

Black ash wood and black skin texture are calm and elegant

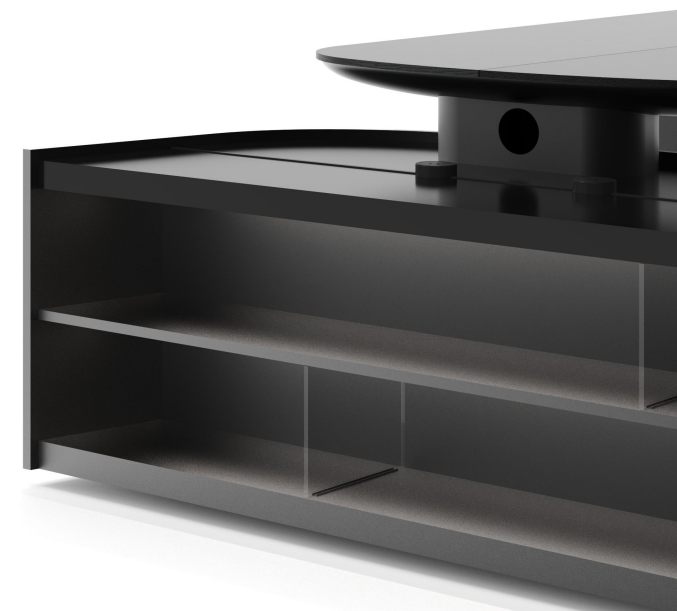


大弧度设计弱化机械感，平衡效率与人文
关怀

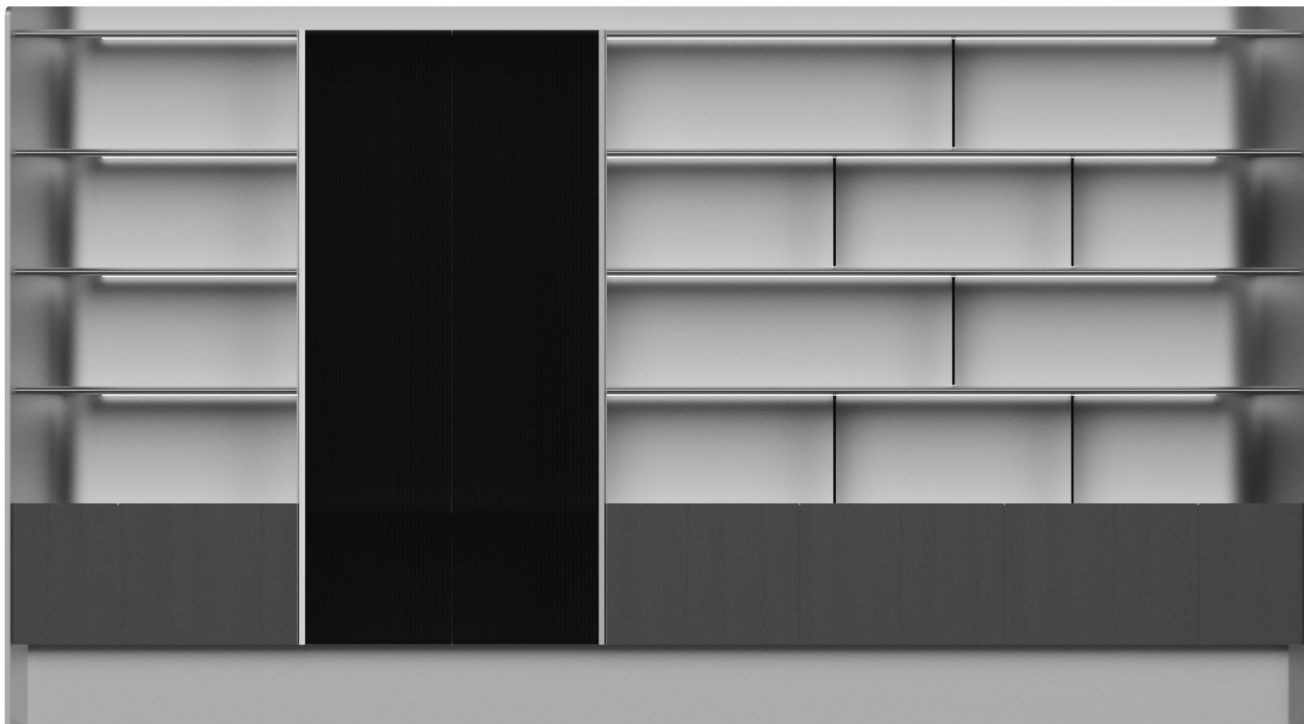
The large arc design weakens the
mechanical feel and balances efficiency and
humanistic care



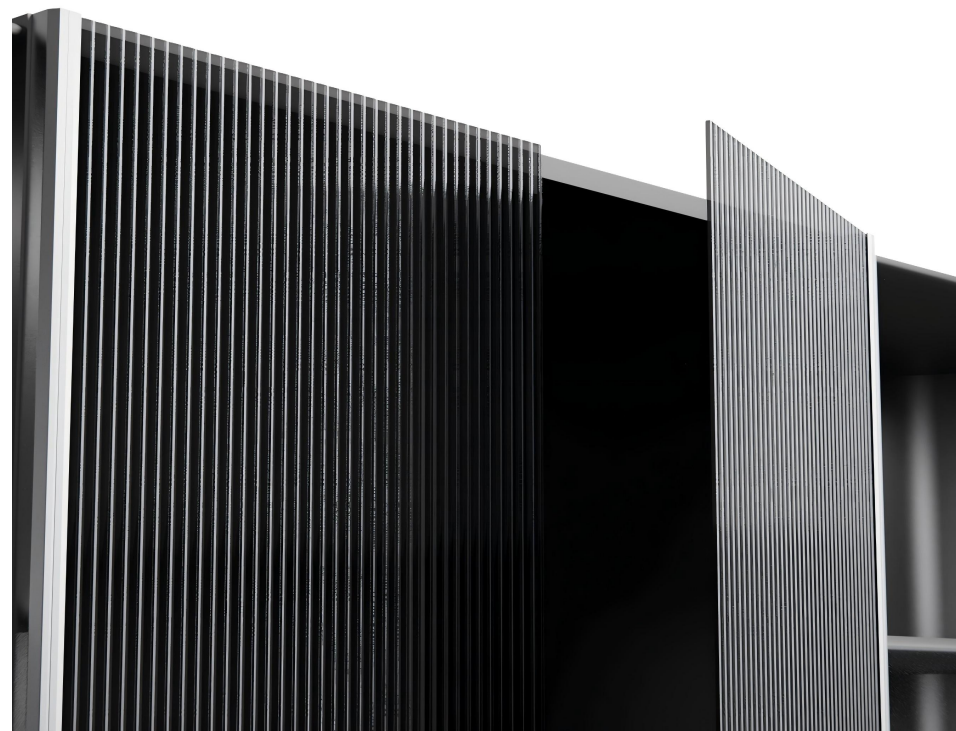
轨道式插座
Track socket



副柜左侧为开放式
The left side of the auxiliary cabinet is open



圆弧侧板，柔和线条提升柜体整体精致感与设计感
Soft lines enhance the overall sense of refinement and
design of the cabinet.



黑色铝框玻璃门
Black aluminum frame glass door



玻璃钢材质轻便承重强，耐腐蚀不易损，搭配柔和线条提升家具质感

Fiberglass is lightweight yet strong, resistant to corrosion and durable, and its soft lines enhance the texture of the furniture.

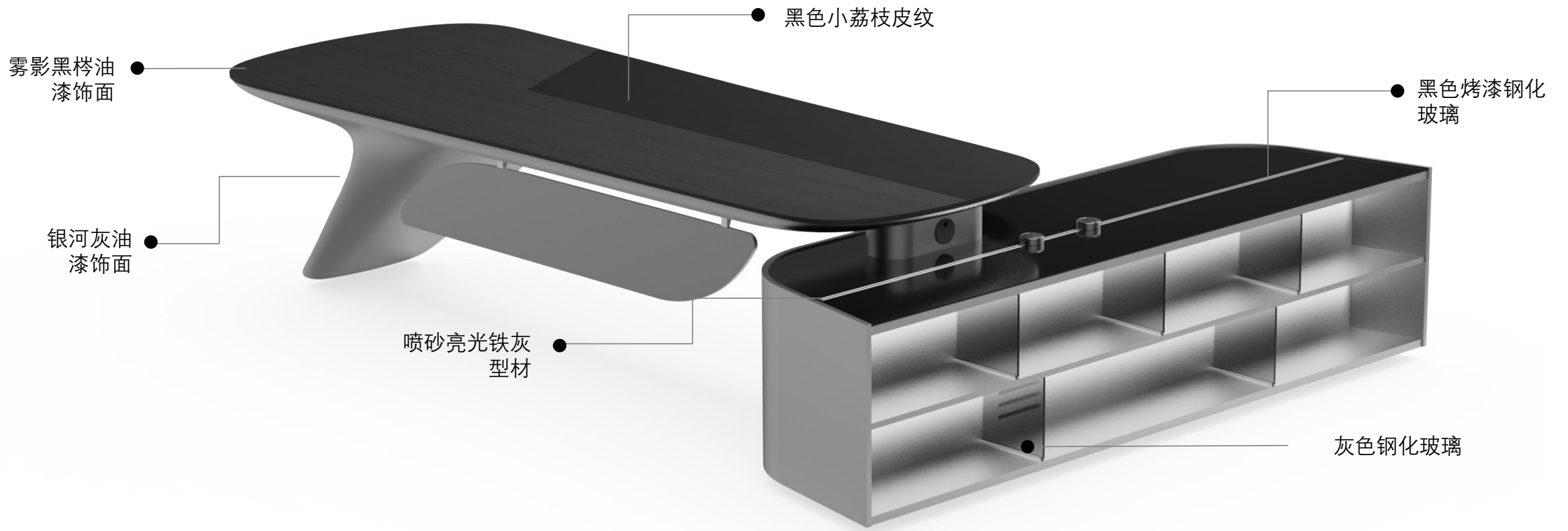


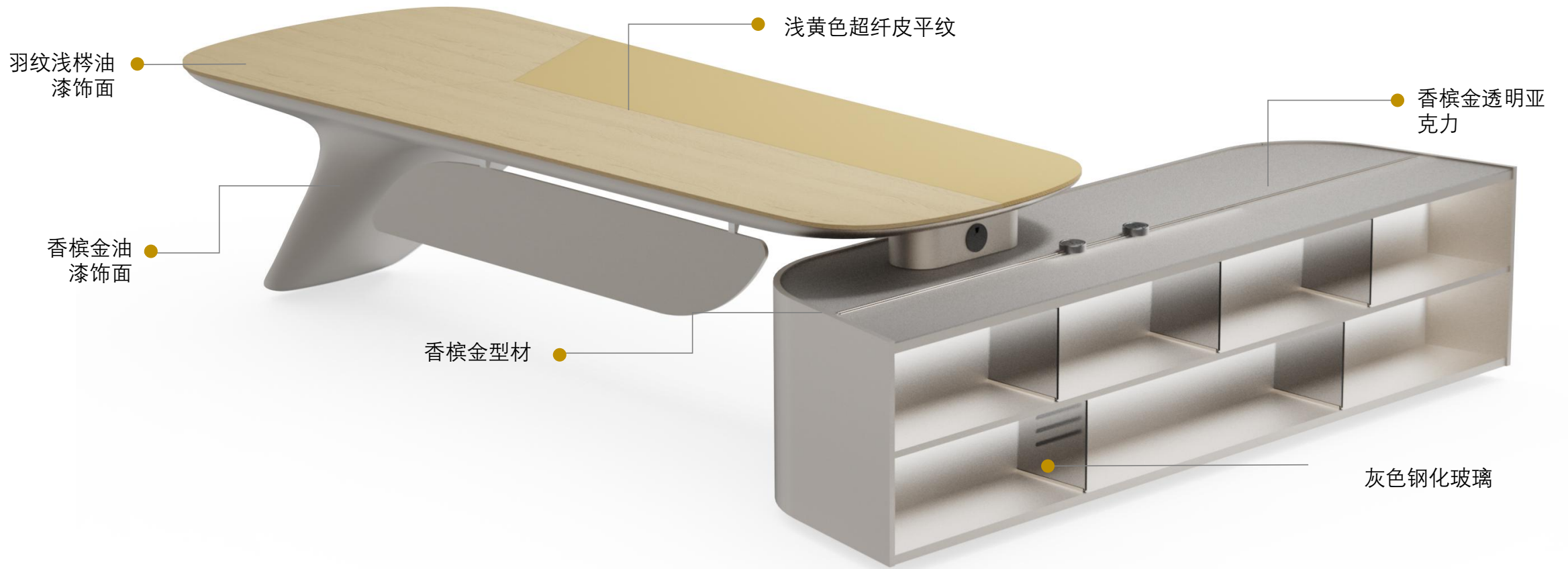
滑轨线盒

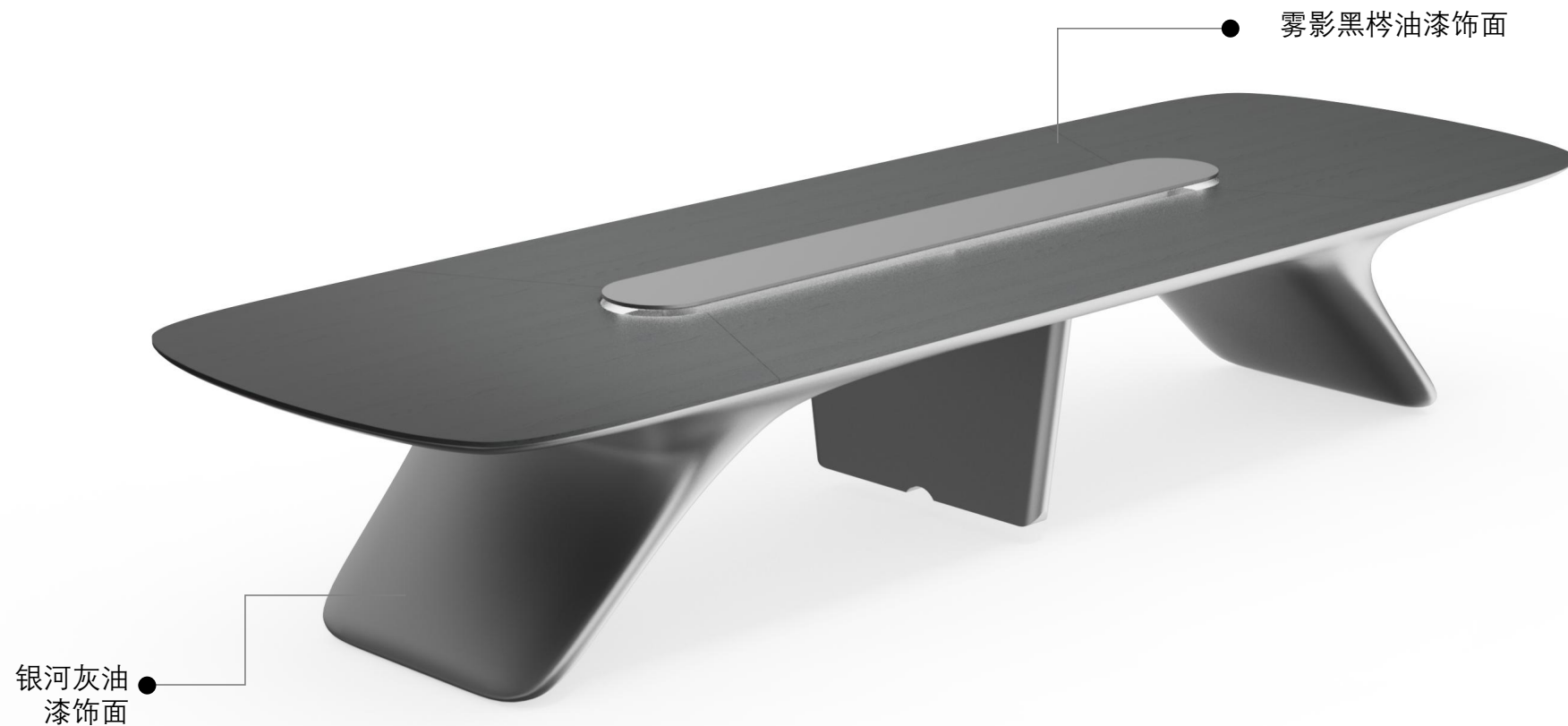
Sliding rail junction box

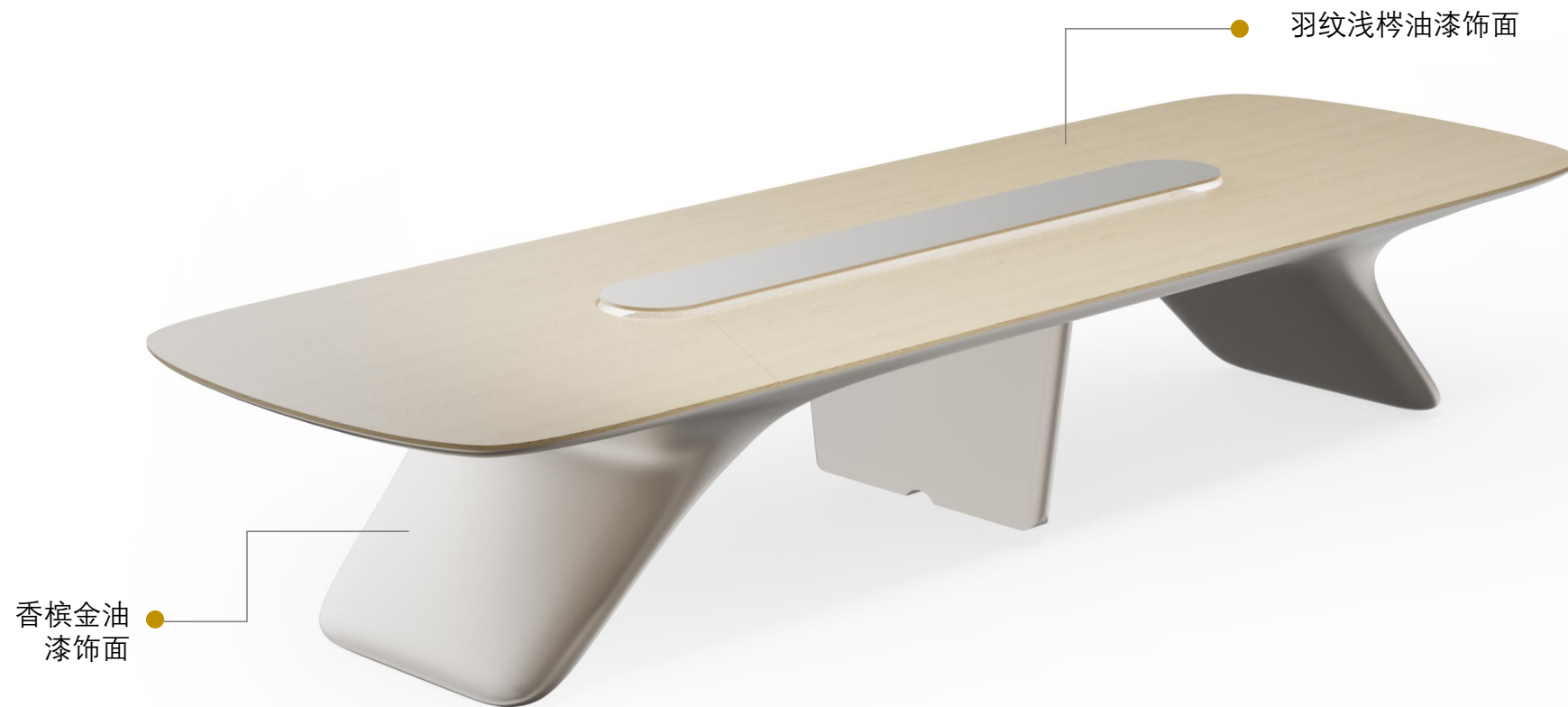
5

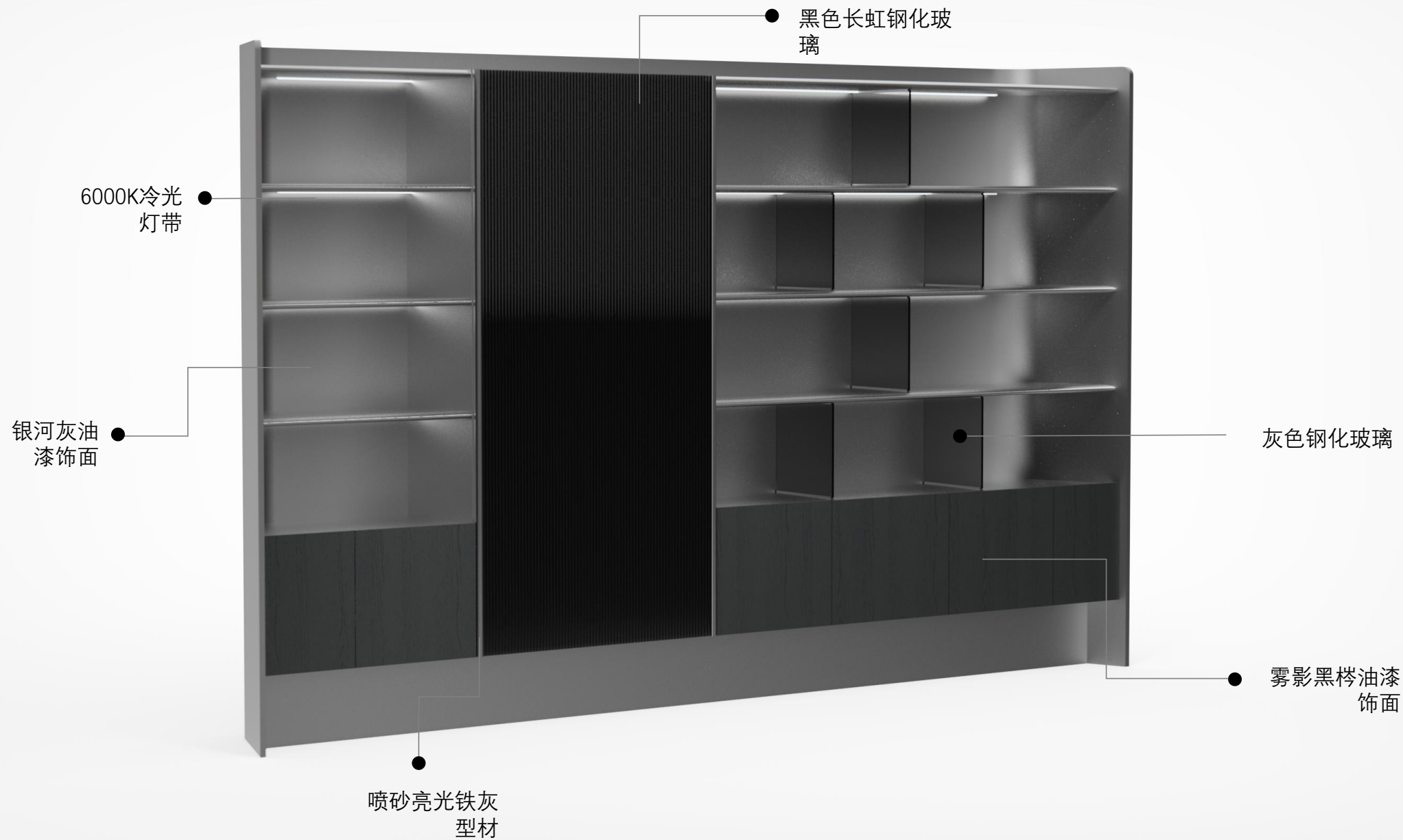
配色说明

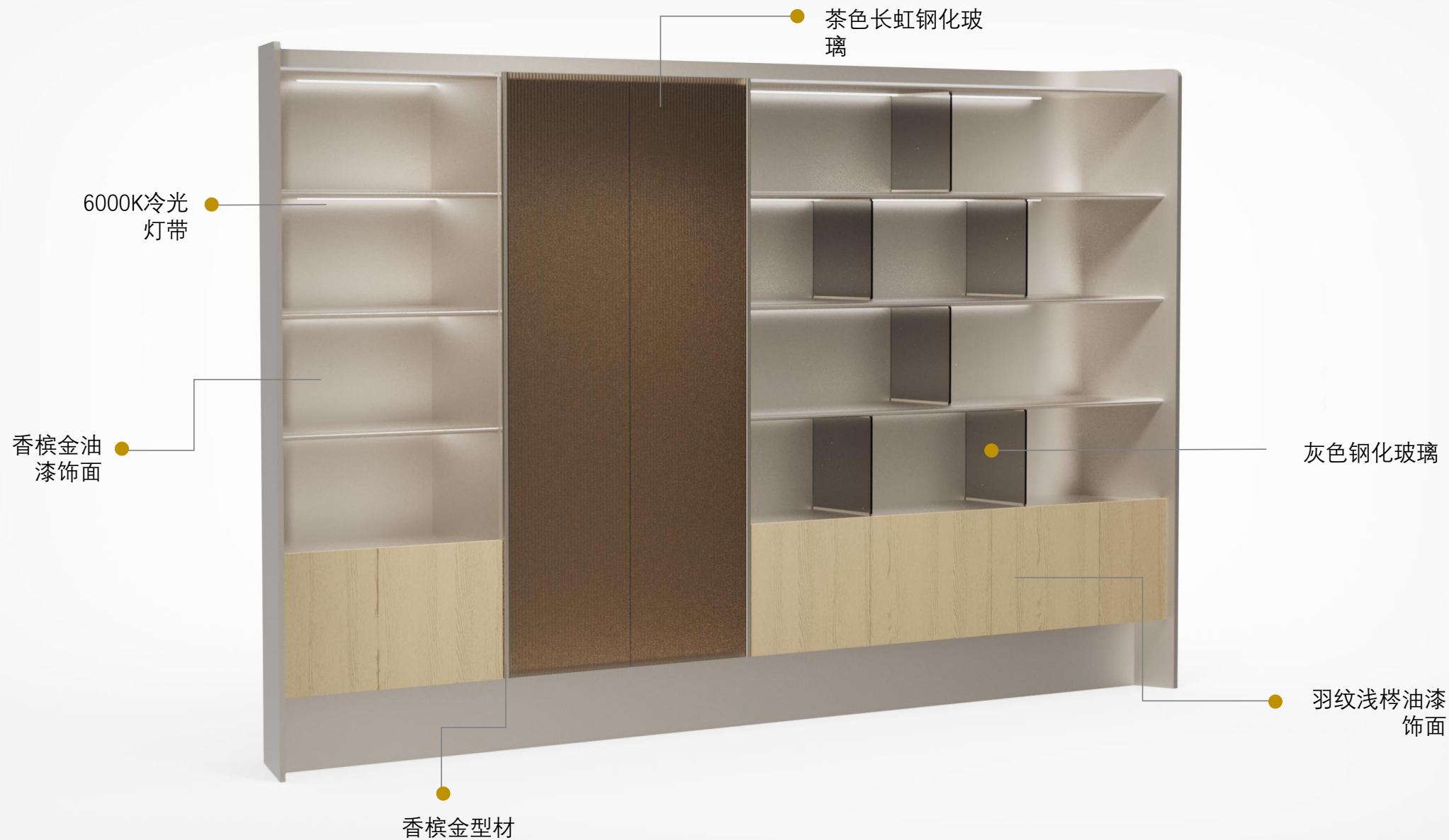










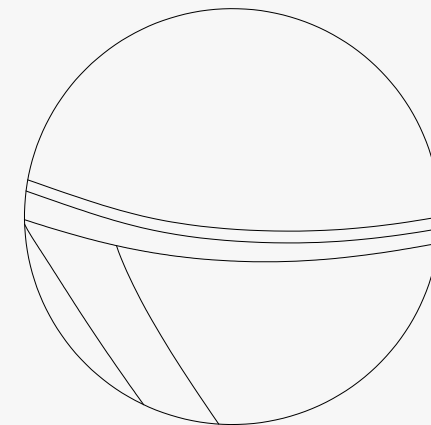
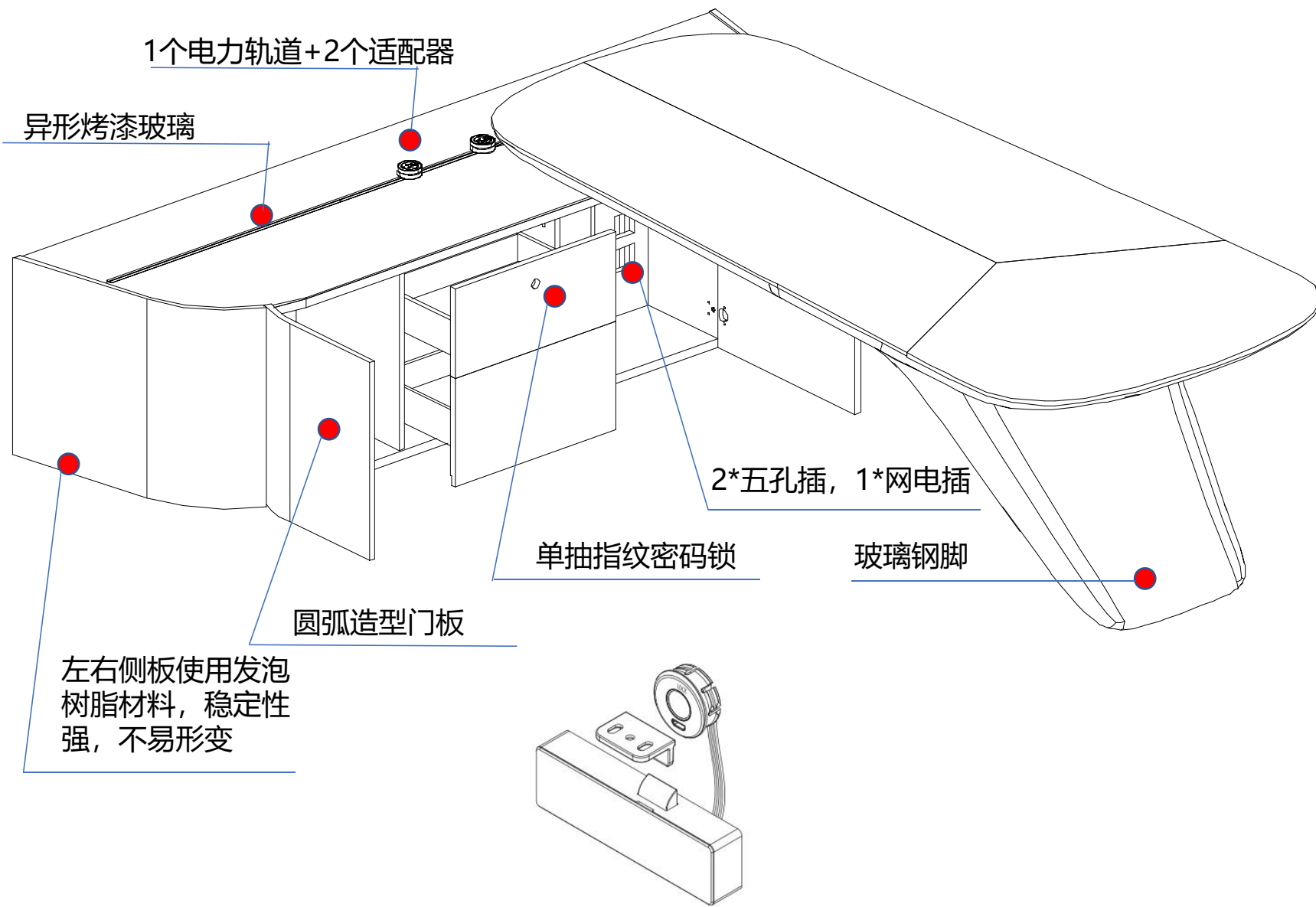




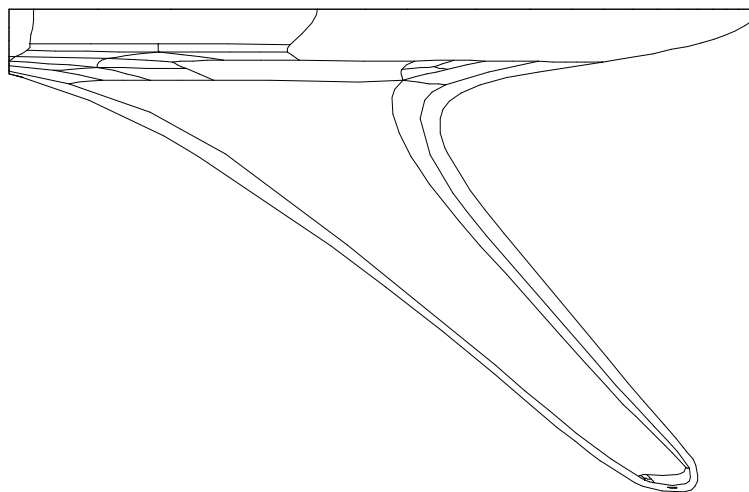
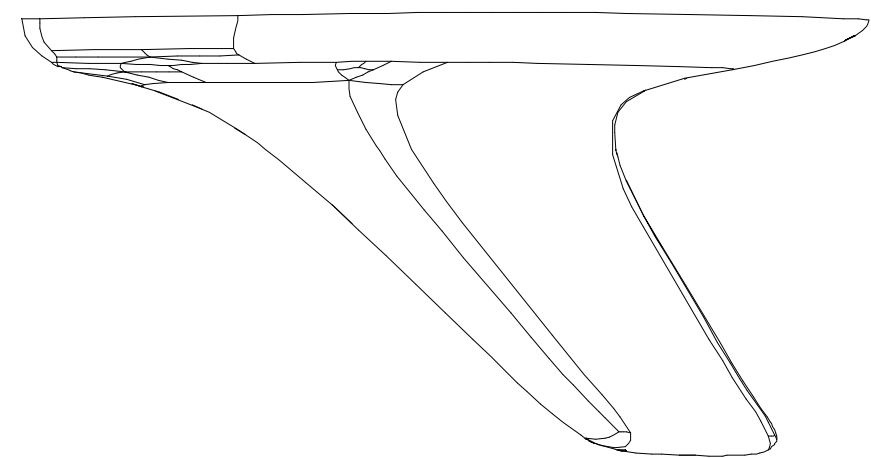


6

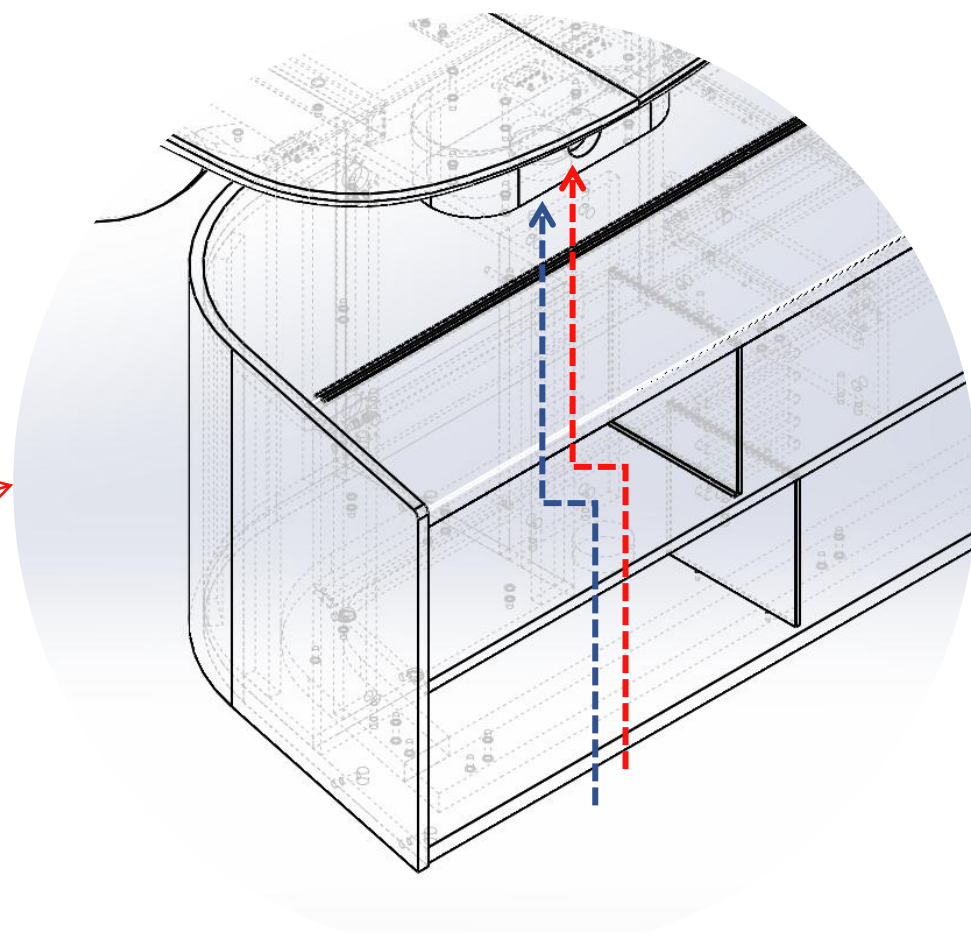
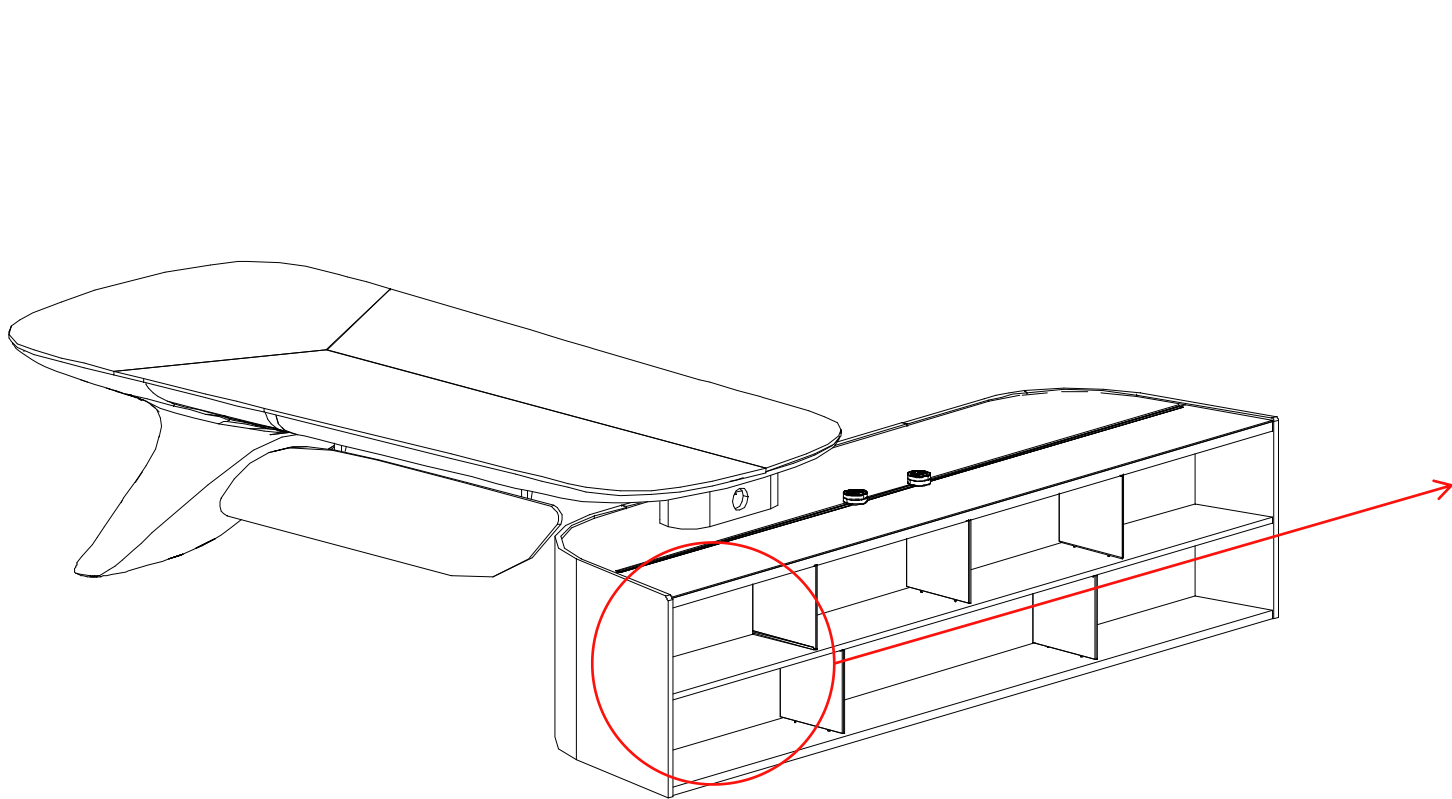
工艺方案

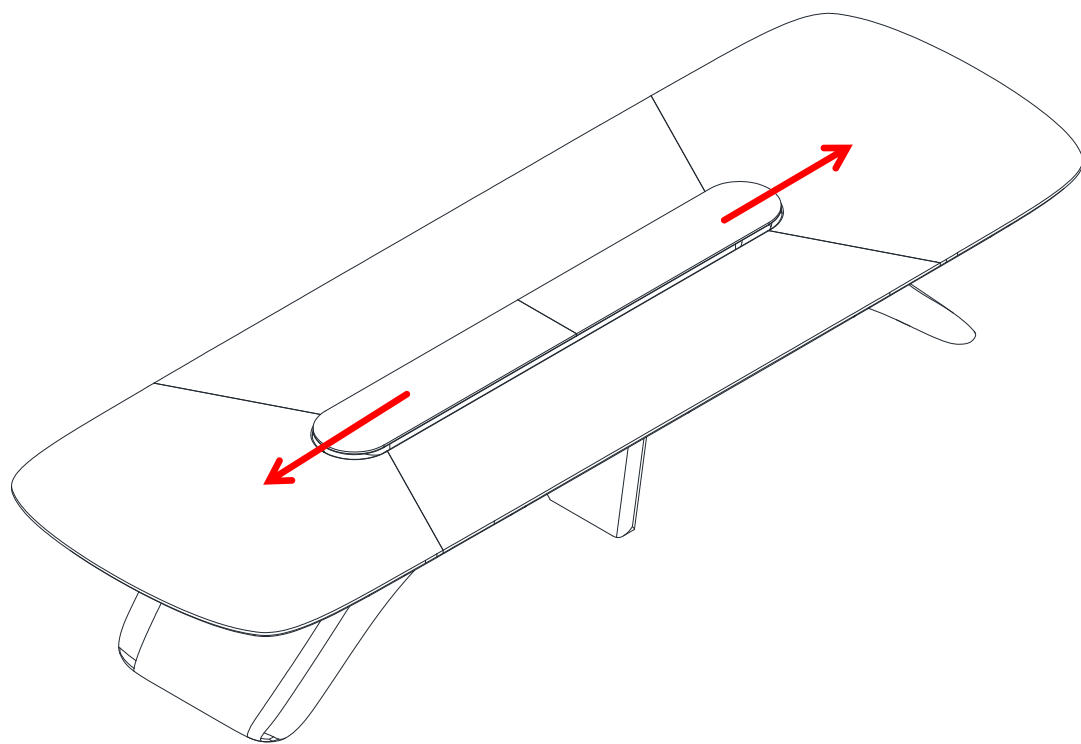


- 1.上台面厚度12，大圆弧边造型
- 2.3款开模件，玻璃钢+型材+圆弧板
- 3.单抽指纹密码锁最多可录入20枚指纹
- 4.支撑钢管壁厚2.5mm
- 5.五轴加工中心设备加持
- 6.侧柜透明亚克力反面喷漆

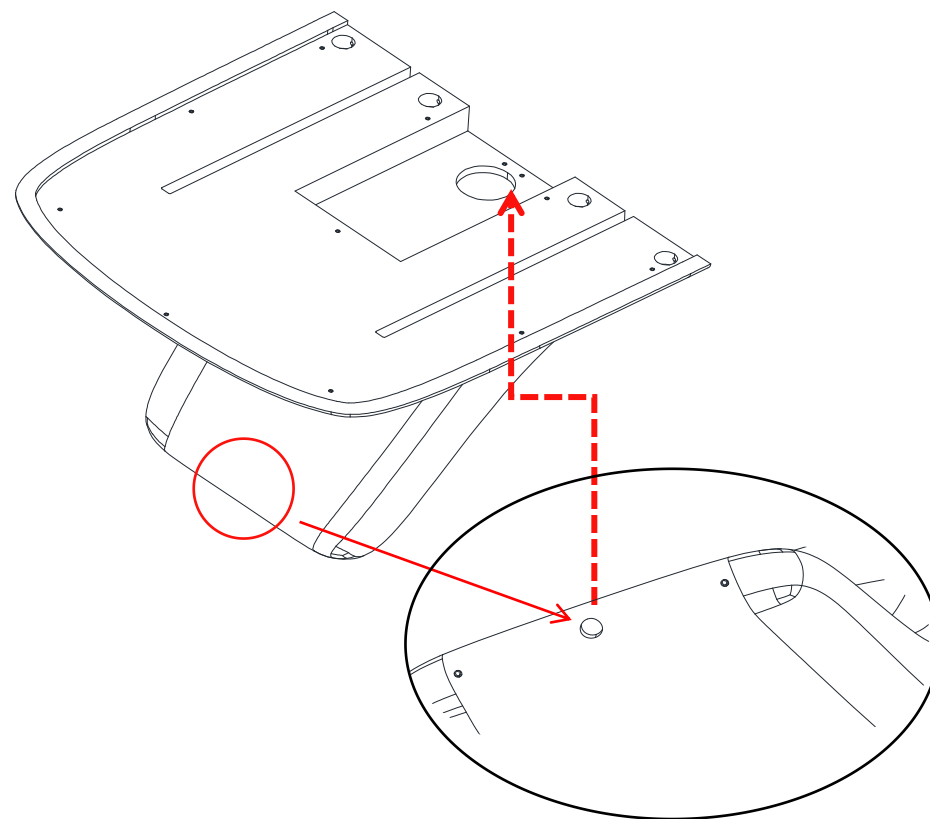


- 1.玻璃钢壁厚4-5mm
- 2.钢制模具提升其成型尺寸精度及表面光洁度
- 3.内置钢管承重
- 4.油漆打磨的精细度处理

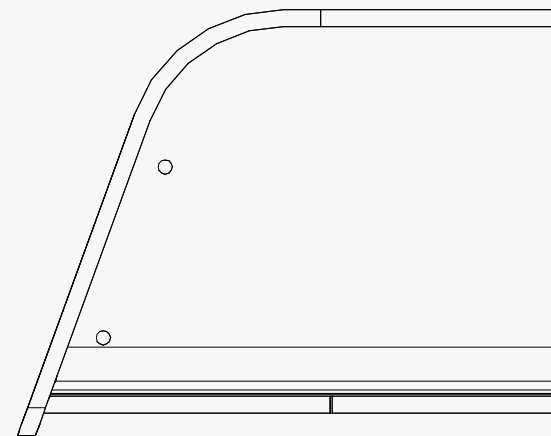
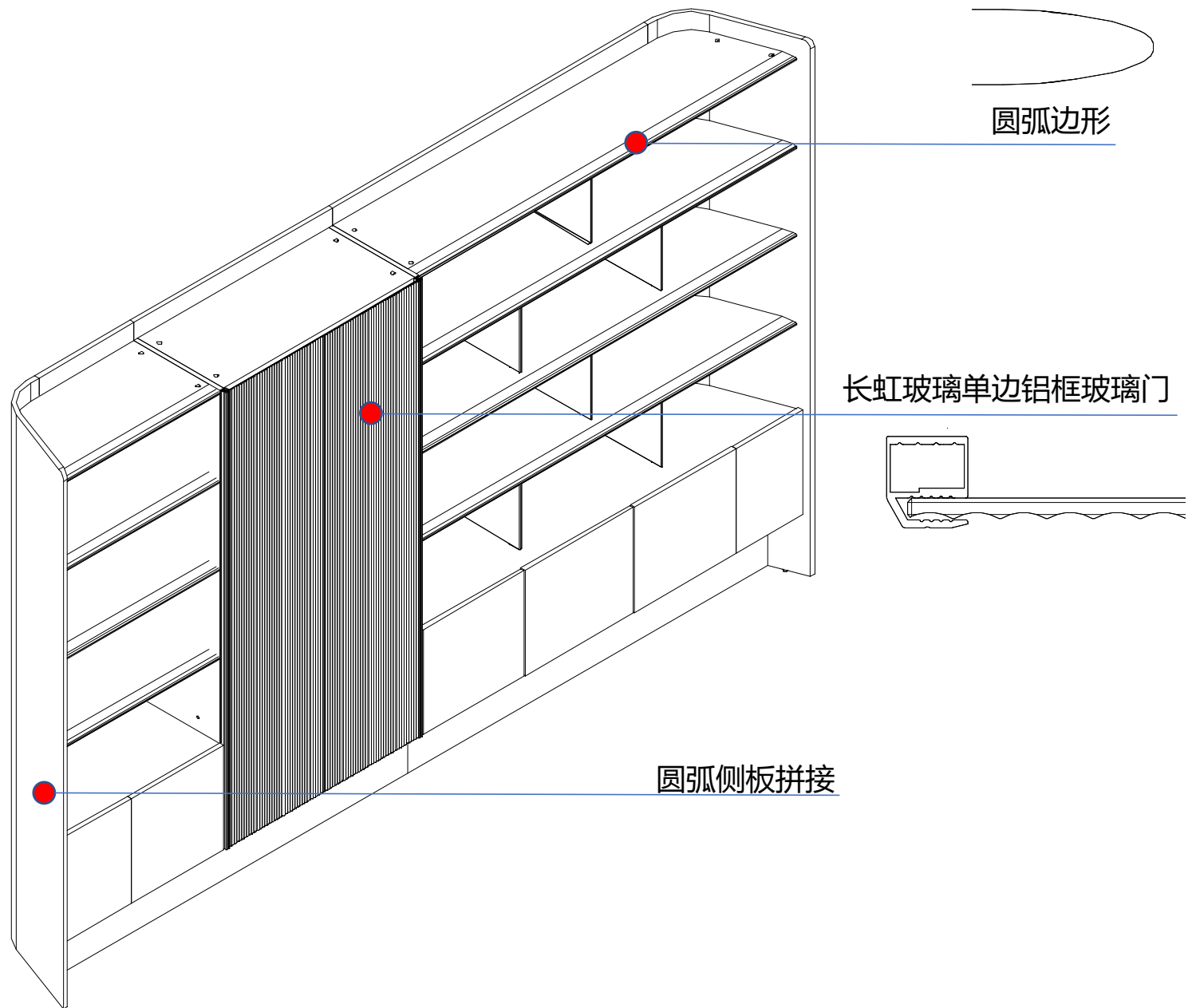




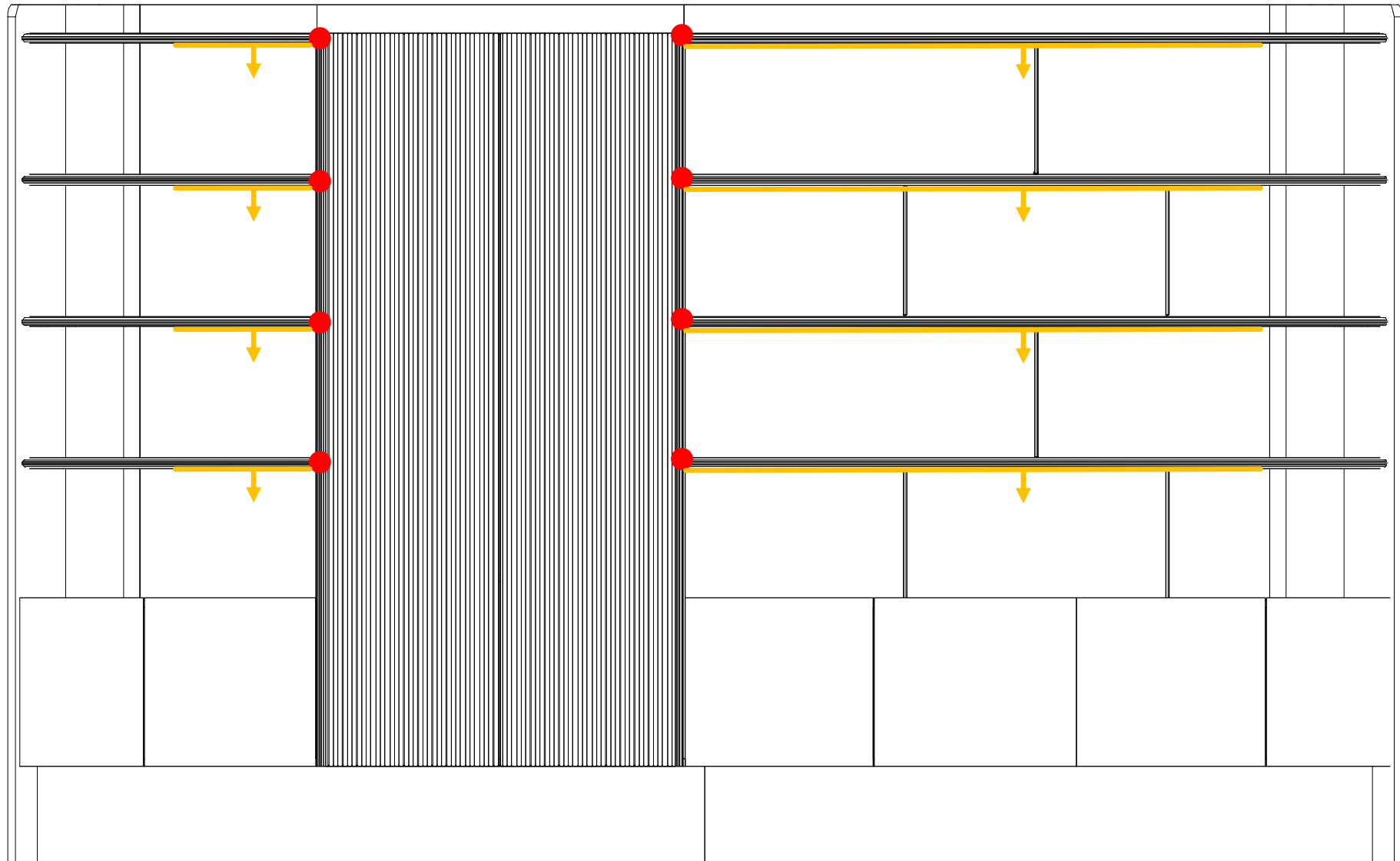
侧滑线盒，两侧开启，单
边抽拉行程160mm



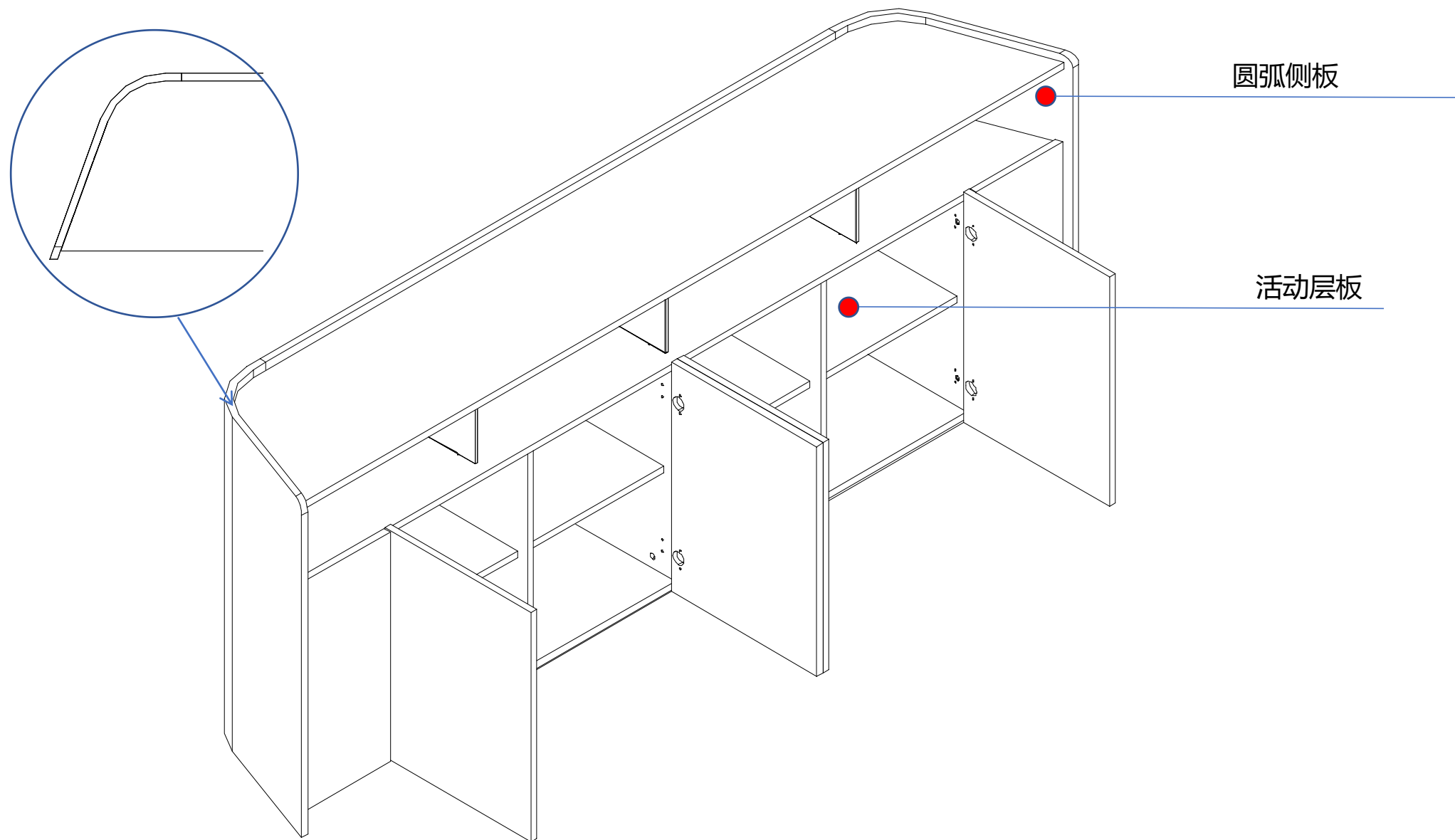
玻璃钢脚过线，内置
pvc管固定路径

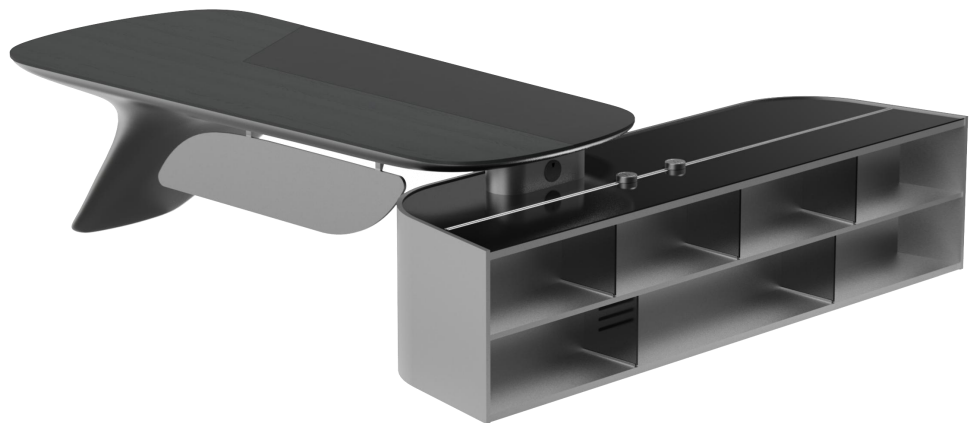


- 1.左右侧板使用发泡树脂材料，开模制作，提高产品稳定性与耐用性
- 2.侧板采用圆弧设计，其与层板的拼接工序对加工精度提出更高要求，进而体现了工艺水平
- 3.新开模型材加长虹玻璃制作单边铝框玻璃门



红色原点为灯带过线孔，黄色箭头为灯带打光方向





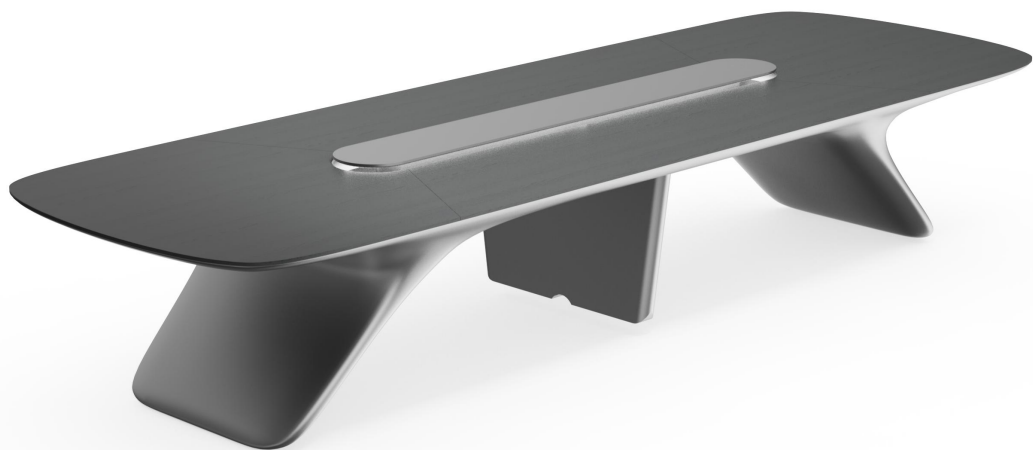
MLG80.32/28/24/20

- 1: 玻璃钢开模件不接受定制;
- 2: 侧板开模件, 侧柜宽度不接受定制;
- 3: 电力轨道插头电源线 (含国标、英标、美标), 五孔适配器支持国标及万能款;
- 4: 万能款五孔适配器下单交期20天, 英、美标插头电源线下单交期10天;
- 5: 侧柜内部板件以及抽屉内板件为防火板材质;
- 6: 安装时需注意侧柜通电, 地面-圆孔上线-五孔插座-电力轨道;



MLG90.38/34/30

- 1: 高管柜长度建议不超过3800;
- 2: 侧板开模件, 宽度不接受定制;
- 3: 注意灯带穿线和通电;
- 4: 单边铝框门不推荐定制;



MLG70.42/36/32/28/22

- 1: 配色可接受定制;
- 2: 玻璃钢开模件;宽度不接受定制;
- 3: 注意灯带穿线和通电



MLG40.24

- 1: 配色可接受定制;
- 2: 侧板开模件, 宽度不接受定制;

THANKS

kano