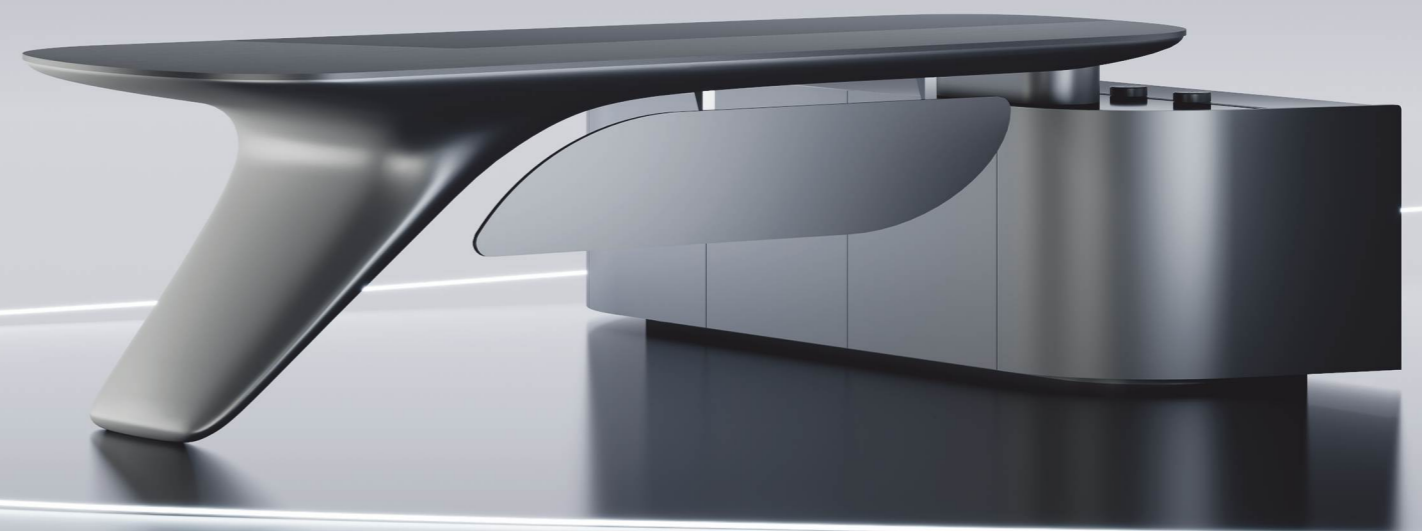


NEOFLOW

流光



微信视频号



微信公众号



抖音号

总部地址

中国·浙江 湖州市安吉县递铺镇塘浦工业园梅灵路 758 号

Company Address

No.758 Meiling Road,Tangpu Industrial Zone,Anji County,Huzhou City,Zhejiang Province

TEL:400 926 0980

www.kano-cn.com / www.kano-global.com

kano

CYBER STREAMLINES, OFFICE
AESTHETICS.

流线之美，未来办公

NEOFLOW 流光

流线型曲面与柔性科技的融合，打破刚性边角，塑造既高效又舒适、未来感与人性化交织的办公空间。

The Fusion of Streamlined Curves and Flexible Technology, Breaking Rigid Corners, Shaping an Office Space that is Both Efficient and Comfortable, Interweaving a Sense of the Future with Humanization.





「轨道式插座」 POWER TRACK SYSTEM OUTLETS

巧妙融合电源与办公需求，简洁高效，完美适应现代办公的灵活与美学。

Cleverly Integrating Power and Office Needs, Simple and Efficient, Perfectly Adapt to the Flexibility and Aesthetics of Modern Office Work.



「安全指纹锁」 INTELLIGENT FINGERPRINT LOCK

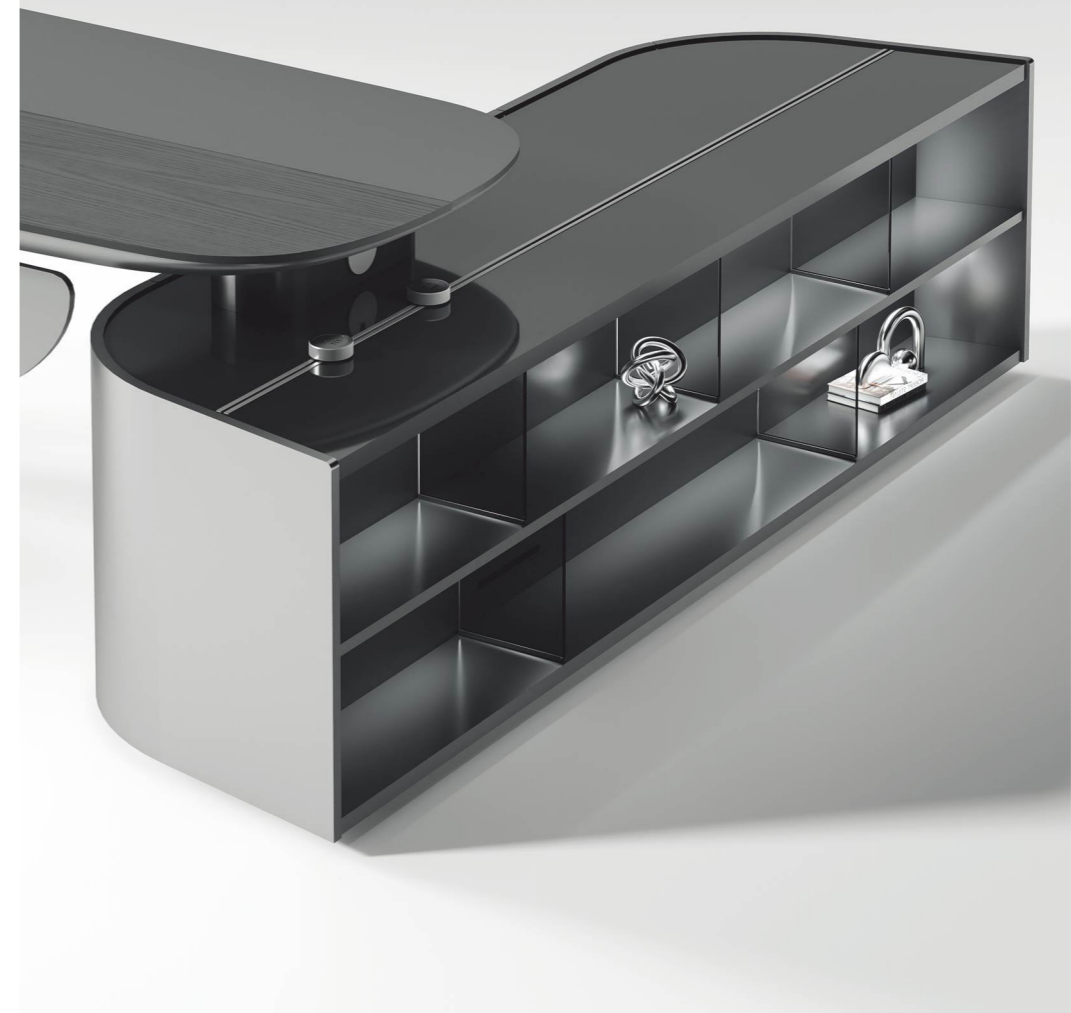
轻触瞬启，安全防护全面进阶。

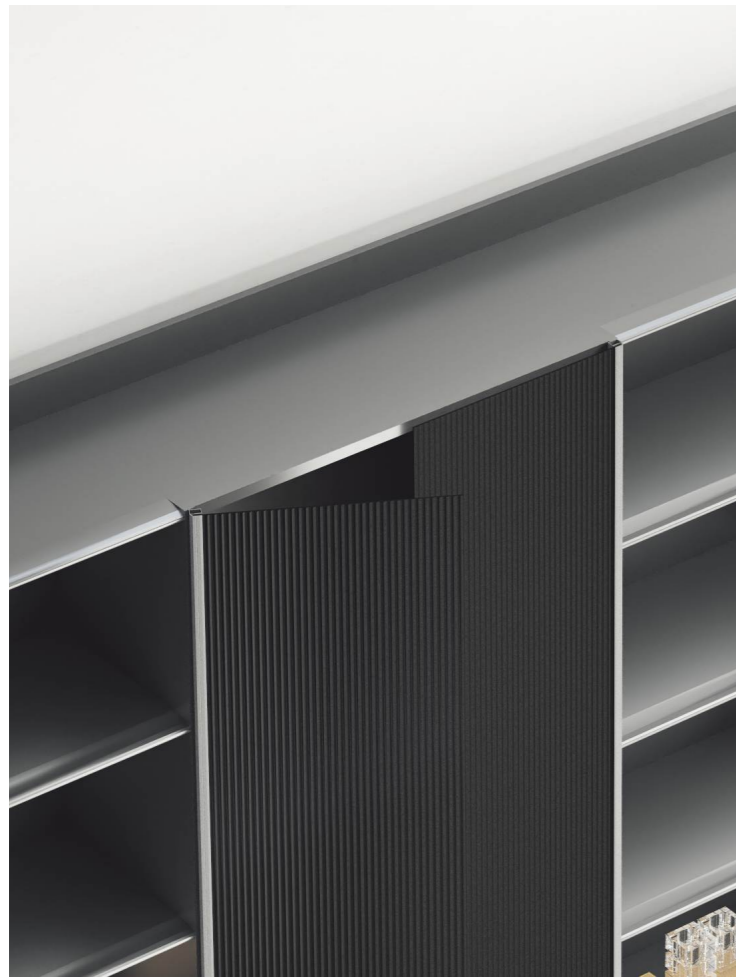
Light Touch, Instant Activation, providing Comprehensive Advancement in Privacy Protection. Open side cabinet



「开放式副柜」 OPEN SIDE CABINET

开放式副柜，大弧度设计弱化机械感，
平衡效率与人文关怀，提升空间的便捷性与舒适度。
Open side cabinet, Large Arc Design Softens Mechanical appearance,
Balances Efficiency and Humanistic Care, Enhances the Convenience
and Comfort of the Space.





细节皆有分寸与讲究，每一处触点、每一道工艺都被打磨得干净利落。
Every Detail is Precise and Thoughtful, Every Touchpoint and Every Craftsmanship is Polished to Perfection.





流动曲线与柔性线条勾勒未来感会议空间，光影与科技交织，激发无尽创意与灵感。
Flowing Curves and Flexible Lines Outline a Futuristic Meeting Space, Where Light and
Technology Intertwine, Inspiring Limitless Creativity and Inspiration.





「隐藏式插座」

HIDDEN OUTLETS

巧妙隐藏，保持桌面整洁，为会议空间提供高效、便捷的电力支持，完美融入现代办公美学。

Sleekly hidden, maintaining a clean desktop, providing efficient and convenient power support for meeting spaces, perfectly blending with modern office aesthetics.



EVERY TOUCH BEARS THE MARK OF
EXQUISITE CRAFTSMANSHIP.

羽纹浅栲

每一处触感，皆为匠心



「流动曲线，激发无限创意」

SPARK CREATIVITY

流线型会议桌打破传统矩形边界，营造开放、平等的对话氛围。科技与自然在此交汇，灵感在光影间自然生长。

The streamlined conference table breaks free from the rigid rectangular form, fostering an open and equal atmosphere for dialogue. Technology and nature converge here, with inspiration flourishing naturally amid light and shadow.



「静谧沉稳·深邃雅致」

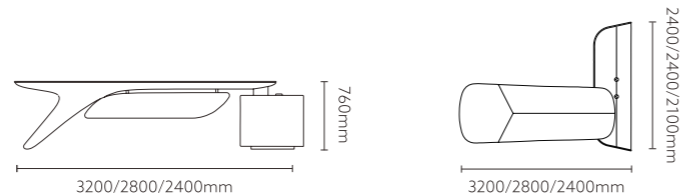
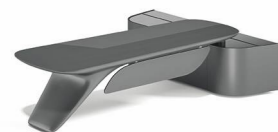
PROFOUND

黑栲之稳，雾影之雅，
为会议空间赋予低调而高级的格调。

The steadiness of black ash, the elegance of misty shadow, lend a low-key yet sophisticated style to the meeting space.



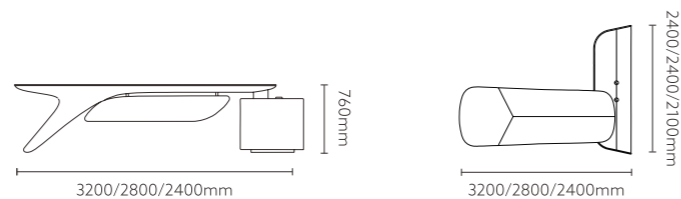
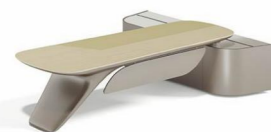
类型 / Classification



MLG80L.32/MLG80L.28/MLG80L.24 3200*2400*760/2800*2400*760/2400*2100*760 (mm)



MLG70.22 2200*1000*760 (mm)



MLG80L.32/MLG80L.28/MLG80L.24 3200*2400*760/2800*2400*760/2400*2100*760 (mm)



MLG90.38/MLG90.34/MLG90.30 3800*450*2100/3400*450*2100/3000*450*2100 (mm)



MLG80L.20 2000*1600*760 (mm)



MLG90.38/MLG90.34/MLG90.30 3800*450*2100/3400*450*2100/3000*450*2100 (mm)



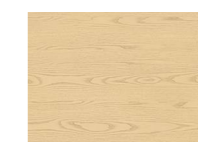
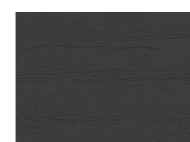
MLG70.42 4200*1400*760 (mm)



MLG40.24 2400*450*900 (mm)



MLG70.36/MLG70.32/MLG70.28 3600*1400*760/3200*1400*760/2800*1200*760 (mm)



CY29 雾影黑栲油漆饰面 **CY27 银河灰油漆饰面** **CY30 羽纹浅栲油漆饰面** **CY28 香榭金油漆饰面**

* 鉴于产品不断更新，日后产品规格等若有变动，以实物为准，不再另行通知。
Given that products may be updated constantly, no further notice will be given in regard of changes in specification, and the real product shall be considered as final.